

CAP-LINES

COMMUNITY ACTION, INC.

Serving Central and Northeast Kansas

Winter 2012

Help people help themselves
Please donate: www.cactiontopeka.com

www.cactiontopeka.com

IN THIS ISSUE

Lead Story	1
Page One	1
Head Start	2
DataBase-Lines	2, 3
Community Services	3
Agency Directory	3
Home and Housing Services	4
Calendar	4

COMMUNITY ACTION'S MISSION SUMMARY

To alleviate the causes and conditions of poverty through the promotion of public policy that helps those in poverty move to greater self-reliance and by providing services and resources that meet basic needs, promote self-reliance and enhance the quality of life for individuals and families.

THE PROMISE OF COMMUNITY ACTION

Community Action changes people's lives, embodies the spirit of hope, improves communities and makes America a better place to live. We care about the entire community, and we are dedicated to helping people help themselves and each other.



Lead Story

Agency receives United Way grants

Funds for early childhood education and basic needs activities

THE UNITED WAY OF GREATER TOPEKA, during its first wave of allocations for 2012, has awarded Community Action, Inc. funds for its Head Start and Community Services components.

The agency received an early education grant and a basic needs grant to assist with rent and utility payments.

According to the United Way of Greater Topeka, partner agencies now "will lead a progressive effort to change community conditions and to report measurable outcomes to make headway on



United Way of Greater Topeka



Head Start students to benefit from United Way of Greater Topeka grant

overarching 10-year community goals." Those goals include:

Education:

- Increase by 50% the number of children ready to read by kindergarten.
- Reduce by 50% the achievement gap in 3rd grade reading and 6th grade math for our most vulnerable children.

Income:

- Cut the number of financially unstable families in our community in half (financially unstable is defined as those spending 40% or more on housing).

See GRANTS, Pg. 2, Col. 1

Page One

Census shows increased poverty in Kansas

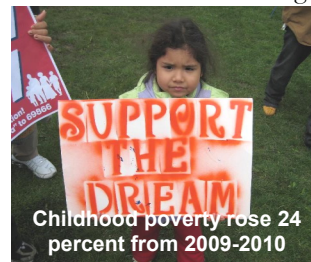
Children are especially vulnerable

ACCORDING TO THE U.S. CENSUS BUREAU, from 2009 to 2010 the overall Kansas poverty rate rose 5.1 percent, from 13.7 percent to 14.3 percent.

However, children under 18 living in poverty rose 24 percent, from 18 percent in 2009 to 23.7 percent in 2010. The 2010 Kansas figure was above the national figure, and the Kansas percent increase was nearly four times the national figure.

Single-female-headed households with children

living in poverty rose 16.2 percent from 2009 to 2010, from 42.7 to 46.2 percent. All figures here were above national averages, with the percent increase being about 3 times the national average.



The rate for children under 18 again is 18.4 percent. The rate for single-female-headed households is 33.2 percent. The rate for single-female-headed households with children under age 18 present is 41.3 percent.

The Kansas Action Network estimates that unemployment has been the chief causative factor in childhood poverty.

END



"Seldom do people discern eloquence under a threadbare cloak."
— Juvenal, Roman Poet, 1st or 2nd century AD

Head Start and Early Head Start

Playground dedicated; tricycles donated

Former Head Start student's name given to playground; three-wheelers go to children

A FORMER HEAD START STUDENT IS HONORED AND REMEMBERED in a way he would have liked and an anonymous gift will provide fun transportation for kids.

PLAYGROUND DEDICATED

Pablo Bolanos-Bautista, who died in an automobile accident in 2009, had his name given to the Infant-Toddler playground at Community Action in a ceremony on January 13. A sign marking the dedication, made possible through a financial donation, shows how important Early Head Start was to him. Pablo's mother, Celia Bautista-Salas, said he considered the Hudson Center to be his second home. The sign will be permanently placed on the north side of the playground.

TRICYCLES DONATED

An anonymous gift of tricycles will bring smiles to many children enrolled in the agency's Head Start program.

The donating group held a team-building conference recently where it had to build 90 tricycles. Most of those tricycles then were given to Head Start families who had signed up. Names were drawn for the remaining tricycles.

The tricycles were presented to the children at the Ramada



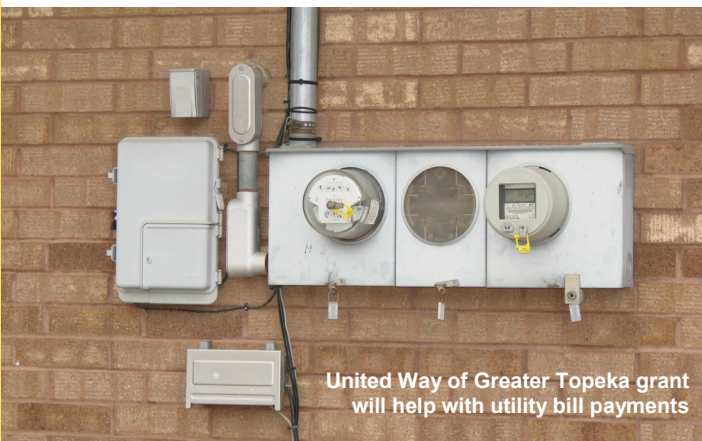
Head Start Director Phyllis Marmon (far right) and Pablo Bolanos-Bautista's family gather for the dedication

Hotel and Convention Center, 420 SE 6th. When families arrived to pick up their tricycles, they also were given the tools that were used to put them together and helmets to ride them safely. **END**

GRANTS, from pg. 1

Health:

- Reduce by 10% the number of adults who are overweight or obese.
- Reduce by 20% the number of 6th through 12th graders who illegally use alcohol, cigarettes and marijuana



"We are excited to announce funding awards to begin progress toward community goals," said Scott Griffith, board chair. "Local programs are already assembling to begin this important work for the future of our community, and we look forward to reporting progress along the way."

According to the group, nine grant review panels, comprised of a more than 100 trained community volunteers, participated in the evaluation of proposals and made determinations on where United Way donor dollars would be invested, the group said. Agencies received award notifications in December 2011 and agreements with partners were finalized mid-January 2012.

"We greatly appreciate the dedication and countless hours of volunteers who were charged with making these tough funding decisions," said Miriam Krehbiel, United Way of Greater Topeka president. "Volunteers are essential in carrying out United Way's commitment to being good stewards of donor dollars."

For more information about the early education grant, please contact Phyllis Marmon at Community Action's Hancock Center at 235-9561. For more information about the basic needs grant, please contact John Homlish at the agency's Swygart Center at 235-9296. **END**



DATABASE-LINES: POVERTY RATES OF COUNTIES IN COMMUNITY ACTION, INC. SERVICE AREA

- Clay County: 11.6 percent (state rate 13.5 percent)
- Dickinson County: 11.6 percent
- Geary County: 12.1 percent
- Jefferson County: 9.0 percent
- McPherson County: 9.3 percent
- Ottawa County: 9.9 percent
- Riley County: 21.2 percent
- Saline County: 17.2 percent
- Shawnee County: 17.5 percent
- Wabaunsee County: 9.3 percent

"Poverty is like punishment for a crime you didn't commit."
— Eli Khamaroy, Uzbek film director, "Lives of the Congnoscenti"

CAP-LINES

WINTER 2012 • PAGE 3
www.cactiontopeka.com



Community Services

Contributions fueled by utility; free tax assistance available

Kansas Gas gives school supplies; free tax prep, e-filing, counseling available

A MAJOR UTILITY MADE A GENEROUS contribution to agency programming and an annual collaboration will once again provide free tax services.

KANSAS GAS SERVICE CONTRIBUTIONS

This past summer the Topeka employees of Kansas Gas Service contributed school supplies to Community Action's annual Back-to-School Fair to be distributed to low-income families.

Those employees also contributed nearly \$3,000 to be earmarked for other programs. That contribution was directed at providing rent and utility assistance to low-income households with school-aged children to prevent eviction or utility disconnections.

That contribution ultimately provided a wide variety of assistance:

- Overall, ten low-income households benefitted
- Three families maintained their water service
- One family received assistance with

their electric bill

- One family was able to keep their gas service
- Five families received rental assistance and avoided eviction

This collaboration between Community Action, Inc. and Kansas Gas Service represents the best of corporate citizenship and partnerships.

FREE TAX ASSISTANCE AVAILABLE

Free tax preparation, counseling and e-filing services once again will be available during the upcoming tax season at Community Action's Swygart Center, 621 SE Swygart, in Topeka, KS.

The agency, in partnership with AARP Tax Aide, will begin offering the services on January 31, 2012 and on Tuesdays and Wednesdays thereafter from 9 a.m. - 3 p.m. through April 17, 2012.

Community Action also will sponsor services to homebound seniors in Shawnee and Wabaunsee counties. Those services are provided by appointment.

For more information, please call the Swygart Center at 785-235-9561 (800-792-7056).

END



Topeka Kansas Gas Service employees with Community Services Director John Homlish (back center).

2012 Free Food Distributions

The Auburn Rural Mobile Food Pantry will be suspended through March 2012, then will be held on the fourth Friday of each month from 1 - 2 p.m. at the Auburn Community Center, 121 West 11th.

The Rossville Rural Mobile Food Pantry will be held on the fourth Wednesday of each month from 12:30 - 1:30 p.m. at Citizen Potawatomi Nation, 806 Nishnabe Trail.

Free food also is available at Community Action's Swygart Center, 621 SE Swygart, on Mondays; first come, first served.

For more information, please call 785-235-9296 (800-792-7056).

January - April 2011 Safe Kids Shawnee County Buckle Up Events

FOR DETAILS CONTACT COMMUNITY ACTION'S
SWYGART CENTER AT 785-235-9296 (800-792-7056)

JAN. 14: 9 a.m. - Noon, Ed Bozarth Chevrolet, 3731 SW Topeka Blvd.

FEB. 11: 9 a.m. - Noon, Ed Bozarth Chevrolet, 3731 SW Topeka Blvd.

MAR. 10: 9 a.m. - Noon, Ed Bozarth Chevrolet, 3731 SW Topeka Blvd.

MAR. 31: 9 a.m. - Noon, Mission Township Fire Station, 3101 SW Urish Rd.

APR. 21: 9 a.m. - Noon, St. Francis Health Center, 634 SW Mulvane

Community Action Directory

ADMINISTRATION:

Hancock Center
1000 SE Hancock
Topeka, KS 66607-1578
Phone: 785-235-9561 (866-235-9561)
Fax: 785-235-9564

COMMUNITY SERVICES, HOUSING AND HOME SERVICES, WEATHERIZATION/WINTERIZATION, CACFP, SAFE KIDS, FIRST TEE:

Swygart Center
621 SE Swygart
Topeka, KS 66607-2070
Phone: 785-235-9296 (800-792-7056)
Building Fax: 785-290-3200
Housing and Home Svcs.: 785-235-9296
Weatherization/Winterization:
785-232-3499
CACFP: 785-232-3258
Safe Kids, First Tee: 785-235-9296

HEAD START,

EARLY HEAD START HOME VISITATION:

Hudson Center
2410 SE Highland Ave.
Topeka, KS 66607-1765
Phone: 785-266-0245 (800-792-8039)
Fax: 785-266-4967

DATABASE-LINES: SPACE HEATER SAFETY TIPS

- Use only space heaters tested to the latest safety standard
- Check for frayed or broken wires, overheating or frayed insulation
- Only use space heaters on the floor; never place them on furniture
- Keep heater at least 3 feet away from flammable materials
- Never lay clothes or any other materials on a space heater
- Turn off all space heaters when the room is empty or before going to bed and unplug all space heaters when not in use
- ONLY use non-electric space heaters indoors IF THEY HAVE BEEN VENTED TO THE OUTSIDE. Carbon monoxide is emitted by these heaters and can cause illness or even death if not properly vented





CAP-LINES

WINTER 2012 • PAGE 4
www.cactiontopeka.com

COMMUNITY ACTION, INC.

ADMINISTRATIVE CENTER
1000 SE Hancock
Topeka, KS 66607-1578
Phone: 785-235-9561 (866-235-9561)
Web: www.cactiontopeka.com

CAP-Lines is a publication of Community Action, Inc. Inquiries regarding content may be directed to Michael Bell at mbell@inlandnet.net.

Funding for this publication was provided in part by the federal Community Services Block Grant through the Kansas Housing Resources Corporation.

ADDRESS SERVICE REQUESTED



If you would prefer to receive CAP-LINES via e-mail, please contact our office at 785-235-9561 (866-235-9561) or mbell@inlandnet.net.

Non-Profit
U. S. Postage
PAID
Topeka, Kansas
Permit No. 502



Home and Housing Services

Mild winter still means heat needed

Winter kits issued; facility improvements made

A VERY MILD WINTER THUS FAR hasn't affected the need for heat for many clients.

The Weatherization Program uses the state's Cold Weather Rule each year to provide emergency heating system repairs or replacements to approved applicants.

The Cold Weather Rule prohibits utility companies from disconnecting a customer's natural gas or electric service during periods of extreme cold and requires utility companies to offer a 12-month payment plan to allow consumers to maintain or re-establish utility service.

WINTERIZATION KITS

Community Action completed its series of energy education workshops in November, which informed clients of energy saving ideas and practices.

Additionally, qualified participants each received a winterization kit to help reduce air infiltration into their homes during the cold months.

FACILITY IMPROVEMENTS

New roofs and gutters now adorn all five of the Community Action Homes single-family dwellings, bringing to a close work done resulting from last year's hail storm.

Weatherization work has begun on the McKinley Apartments in Clay Center, KS which will reduce energy costs and alter the appearance of the apartment building, which used to be a school.

END



McKinley Apartments in Clay Center, KS

COMMUNITY ACTION CALENDAR

February, March, April 2012

Board of Directors' Meetings

- FEB. 1:** Executive Committee
- FEB. 14:** Community Committee
- FEB. 16:** Head Start Review Committee
- FEB. 28:** Program Committee
- FEB.:** Finance Committee TBA

- MAR. 7:** Executive Committee
- MAR. 8:** BOARD OF DIRECTORS' MEETING
- MAR. 13:** Community Committee
- MAR. 15:** Head Start Review Committee
- MAR. 22:** Housing Committee
- MAR. 27:** Program Committee
- MAR.:** Personnel Committee TBA

- APR. 4:** Executive Committee
- APR. 10:** Community Committee
- APR. 19:** Head Start Review Committee
- APR. 24:** Program Committee
- APR.:** Finance Committee TBA

TBA = To Be Announced

Events, Holidays

- FEB. 20:** Presidents' Day (Agency Closed)
- APR. 6:** Good Friday (Agency Closed)