

Community Action, Inc.

Wabaunsee County Kansas



Helping People
Help Themselves

THE PROMISE OF COMMUNITY ACTION

*Community Action changes people's lives,
embodies the spirit of hope,
improves communities, and makes
America a better place to live.*

*We care about the entire community,
and we are dedicated to helping people
help themselves and each other.*



Helping People. Changing Lives.

Directory

Head Start

McFARLAND OFFICE
208 Main St.
McFarland, KS 66501
Phone: 785.765.2227

HUDSON CENTER
2410 SE Highland Ave.
Topeka, KS 66605-1765
Phone: 785.266.0245 or 800.792.8039
Fax: 785.266.4967

Administrative Services

Early Head Start Home Visitation

HANCOCK CENTER
1000 SE Hancock St.
Topeka, KS 66607-1578
Phone: 785.235.9561 or 866.235.9561
Fax: 785.235.9564

Community Services

Housing Services, Weatherization CACFP

SWYGART CENTER
621 SE Swygart St.
Topeka, KS 66607-2070
Community Services Phone: 785.235.9296 or 800.792.7056
CACFP Phone: 785.232.3258
Housing, Weatherization Phone: 785-235-6671
Fax: 785.290.3200

Affordable Housing

SUPPORTIVE HOUSING PROGRAM
Topeka, KS
Phone: 785.235.9561 or 866.235.9561

SWINGLE HOUSE APARTMENTS

Leonardville, KS
Phone: 785.293.5215

MCKINLEY APARTMENTS

Clay Center, KS
Phone: 785.632.6846

MERIDEN HEIGHTS

Meriden, KS
Phone: 785-484-2109

*Funding for this publication was provided in part by the federal
Community Services Block Grant through the
Kansas Housing Resources Corporation.*

About Community Action, Inc.

Community Action, Inc., is a private non-profit organization that has its roots in President Lyndon Johnson's War on Poverty. Established in 1970, Community Action is a proud part of a nationwide network of **1,000** local private and public community action agencies that serve more than **16 million** low-income people annually in **96 percent** of the nation's counties.



(L to R) Susan Wheatley, Executive Director,
and Fran Lee, Board President

The Community Services Block Grant (CSBG) is the contemporary federal support for the War on Poverty's community action network. CSBG funds are received by Community Action and are an essential resource even though they represent only **nine (9) percent** (October 2008) of the agency's budget. CSBG funds support the human service structure that allows Community Action to leverage nearly **\$12.09** (October 2008) in additional state, local and private funding for every \$1.00 received from the CSBG, all of which are directed toward the agency's mission:

*To alleviate the causes and conditions of poverty
through the promotion of public policy that
helps those in poverty move to greater self-reliance,
AND by providing services and resources that meet
basic needs, promote self-reliance and
enhance the quality of life for individuals and families.*

Though not all services are available in all counties - a fact often dictated by the funding source - Community Action's CSBG service area includes Clay, Dickinson, Geary, McPherson, Ottawa, Saline, Shawnee and Wabaunsee Counties in Kansas.

Community Action has a budget of nearly **\$5 million** and administers **27 program grants on 7 different fiscal years**. The agency employs **58** associates and has program facilities at **3** locations in Shawnee County and **1** in Wabaunsee County. It owns and operates affordable housing complexes in Clay, Jefferson, Riley and Shawnee counties.

Community Action, Inc. Programs in Wabaunsee County

Community Action programs are designed to help Wabaunsee county families and individuals conserve resources, maintain optimal health, achieve educational and employment success and live independently. Here's an overview of the agency's departments and the programs that they operate.

COMMUNITY SERVICES

The Christmas Adoption Program accepts applications from low-income families who want to be adopted for the holidays. Those families are then matched with individuals and groups who want to adopt them. The Santa Express then delivers to those families. Also, baskets are delivered to homebound seniors.



The Commodity Supplemental Food Program (CSFP) distributes food to children up to six years of age and seniors over 60 years of age. Children whose families are at or below 185 percent of the poverty level and seniors who are at or below 130 percent of the poverty level can qualify.



Elderly Services provides liquid nutrition and commodity delivery services that allow people 60 years of age and over to better maintain their health, safety and independence.

Propane Payment Assistance is available. Applicants must be at or below 125 percent of the poverty level to qualify for assistance. Also, they must either own their own propane tanks or have a contract with Alma COOP to qualify.

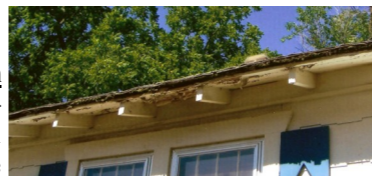
Tax Preparation & Counseling is provided at various locations during the tax season for low-income people. Knowledgeable staff remain available throughout the year to respond to questions regarding tax returns, credits, and farm income.



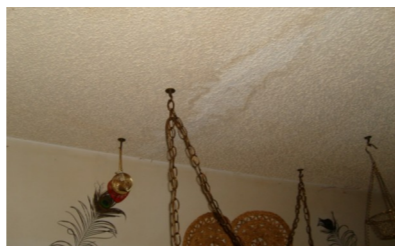
For more information on these programs, please contact Community Services at 800.792.7056.

HOME SERVICES

The **Emergency Repair Program (ERP)** is a State of Kansas program that provides financial assistance to income eligible homeowners to make emergency



repairs to their homes that are necessary to ensure the occupants' continued safety in the home.



The types of emergency repairs can range from roof and ceiling repairs to furnace and foundation repairs.

Community Action, Inc. is the designated Emergency Repair Program provider in Wabaunsee county.

For more information on this program, please contact Weatherization Services at 800.792.7056.



Community Action services are provided at **NO or MINIMAL** cost to eligible participants.

Many Community Action programs are designed to be of assistance in moving those in poverty to greater self-reliance. Age, income **AND/OR** location of residence define eligibility for certain Community Action services. In some cases the funding source establishes the eligibility criteria. In all cases, ever-changing and sometimes limited funding may cap services. Not all services are available in all communities – a fact often dictated by the funding source. An application is required for some services.

Please call for the current status and a detailed description of the eligibility requirements for listed programs.

HEAD START

Head Start, launched in 1964, was designed to help break the cycle of poverty facing preschool children in low-income families. Today Head Start is a comprehensive child development program available to income-eligible families at no cost.



Community Action is a grantee for Head Start programs in Wabaunsee county and offers services for eligible three- and four-year-olds. Education and early childhood development services are provided through a home-based approach.

This approach views the parent as her or his child's first and most important teacher. A trained home visitor goes to client homes to review the child's development and gives ideas for promoting school readiness. Twice monthly, the child and the child's parents attend Parent/Child socialization Activities in a classroom setting to learn more about school readiness.



In addition to early childhood education services, Head Start provides health and nutrition services, family goal setting, and parent involvement opportunities.

To qualify, the child must be at least three years old (and not yet Kindergarten age), and the child's family must meet income guidelines.

For more information, or to ask for an application, please contact Head Start at 800.792.8039.